

INFORMATION PACK



# EARTH EXPLORER COMPETITION

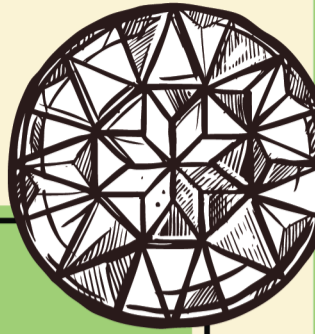
## 2023

COMPETITION  
DAY  
11<sup>TH</sup> FEB

# INTRODUCTION

Earth Explorer Competition is an annual, online national school-level competition that introduces general knowledge about the study of earth and neighboring planets in space.

Primary (Standard 4 up to Standard 6) & secondary school students (Form 1 up to Form 5) from all over Malaysia are invited to join this competition. The aim of this competition is to instill interest in Earth Science and to give exposure to students in this field.



## WHO CAN PARTICIPATE?

### PRIMARY CATEGORY

- **Public School:** Standard 4 up to Standard 6
- **International School:** Year 4 up to Year 6

### SECONDARY CATEGORY

- **Public School:** Form 1 up to Form 5
- **International School:** Year 7 up to Year 11

## STAGES

- **MALAYSIAN EARTH SCIENCE OLYMPIAD (MYESO)**  
The top students in Earth Explorer Competition will be selected for the next stage, the Malaysian Earth Science Olympiad (MyESO)
- **NATIONAL TRAINING CAMP**  
The best students from MyESO will be invited to join the National Training Camp. Students will then be further trained and tested during the online and offline training camp and homework assignments
- **INTERNATIONAL EARTH SCIENCE OLYMPIAD (IESO)**  
The five best students at the national training camp will be chosen to represent Malaysia in the International Earth Science Olympiad (IESO) 2023

## COMPETITION FORMAT



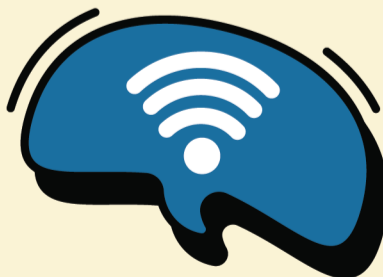
### METHOD

Online



### ANSWERING TIME

1 hour 30 minutes



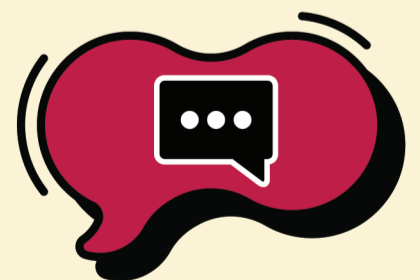
### NECESSITY

Stable internet connection & scientific calculator



### QUESTIONS

30 objective questions



### LANGUAGES

English  
Bahasa Melayu



# SYLLABUS

## PRIMARY

- Earth
- Solar system
- Climate & weather
- Preservation & Conservation
- Mixture
- Technology

Reading materials can be retrieved at :  
[www.myeso.com.my](http://www.myeso.com.my)

## SECONDARY

- General geography
- Physical geography
- Human geography
- Geography of the area
- Environmental management & global issues
- Field works

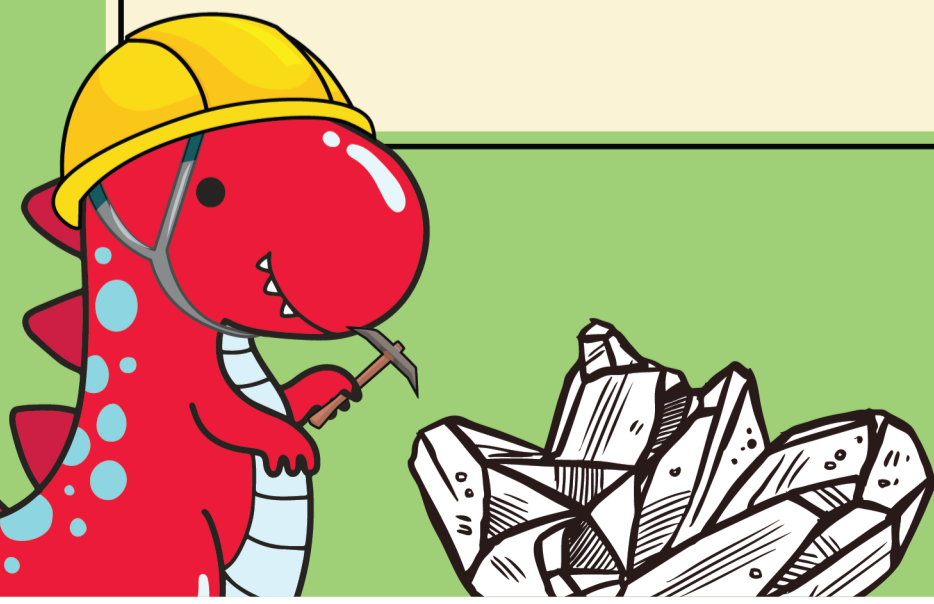
Reading materials can be retrieved at :  
[www.myeso.com.my](http://www.myeso.com.my)

## BENEFITS

Each students will receive a certificate according to your achievements :



- Top 10% students will get an opportunity to attend the **Malaysian Earth Science Olympiad (MyESO)** and be trained by professional and experienced trainers in this field in the National Training Camp.
- Several students from the National Training Camp will have a chance to represent Malaysia in the **International Earth Science Olympiad (IESO) 2023**



# ACHIEVEMENT OF THE MALAYSIAN TEAM IN THE INTERNATIONAL EARTH SCIENCE OLYMPIAD (IESO) 2022

IESO 2022 were hosted virtually by Italy from the 25<sup>th</sup> - 31<sup>st</sup> August 2022. The Olympiad was conducted remotely and participated by 25 countries. The Malaysian representative consists of 4 students and is led by professional and experienced Team Leader, Ms Nur Nadwa Syahirah Ai Zamruddin and Mr Muhammad Hadhri. Ms Nur Nadwa has been our trainer and team leader since 2018. She had experiences in IESO 2018 and IESO 2019.

IESO consists of several test participation (individual, national team & international team). The Malaysian Team made the country proud when one of the test won by our student Tan Sin Yen. She won a Bronze Medal for Data Mining Test (DMT). Other students, Marcus Woo Shuen Hong and Quincy Jules Tan Yi Ling awarded the Silver Award and Bronze Award for their International Team in The Earth Systems Project (ESP). ESP test was participated by international teams consists of students from national teams together with students from other countries team. Congratulations to all members of the team! We are so proud of them!



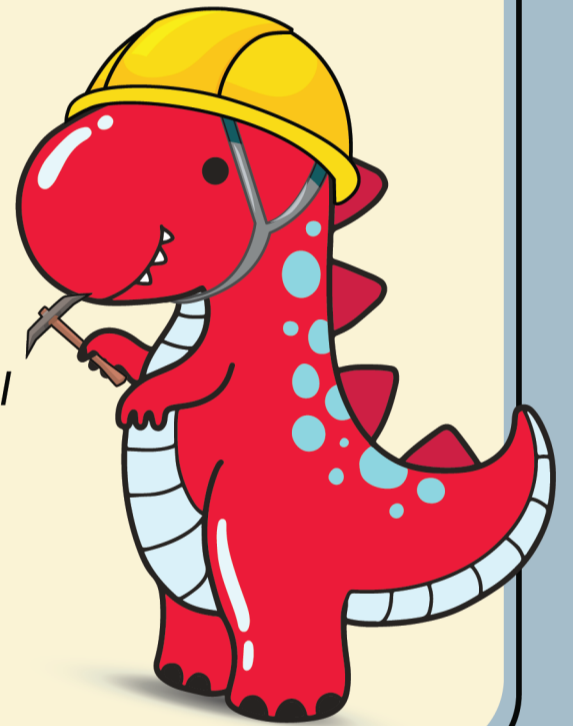
# SAMPLE QUESTION

1. What are the major causes of a tsunami?  
*Apakah sebab utama berlakunya tsunami?*



- A. Underwater earthquakes / *Gempa bumi bawah laut*
- B. Underwater landslides / *Tanah runtuh bawah laut*
- C. Volcanic Eruptions / *Letusan gunung berapi*
- D. All of the above are correct / *Semua di atas adalah betul*

**ANSWER : D**



2. Which ocean is the deepest?  
*Lautan manakah yang paling dalam?*

- A. Arctic / *Artik*
- B. Atlantic / *Atlantik*
- C. Indian / *India*
- D. Pacific / *Pasifik*

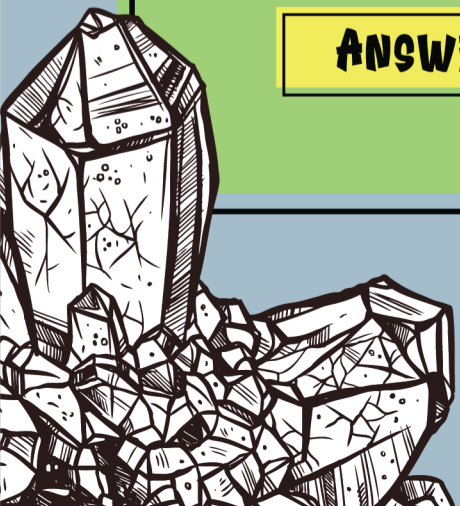
**ANSWER : D**

3. What chemical is most prevalent in any given amount of seawater?

*Apakah bahan kimia yang paling lazim ditemui dalam apa jua jumlah air laut?*

- A. Sodium / *Natrium*
- B. Sulphate / *Sulfat*
- C. Calcium / *Kalsium*
- D. Chlorine / *Klorin*

**ANSWER : D**



# SAMPLE QUESTION

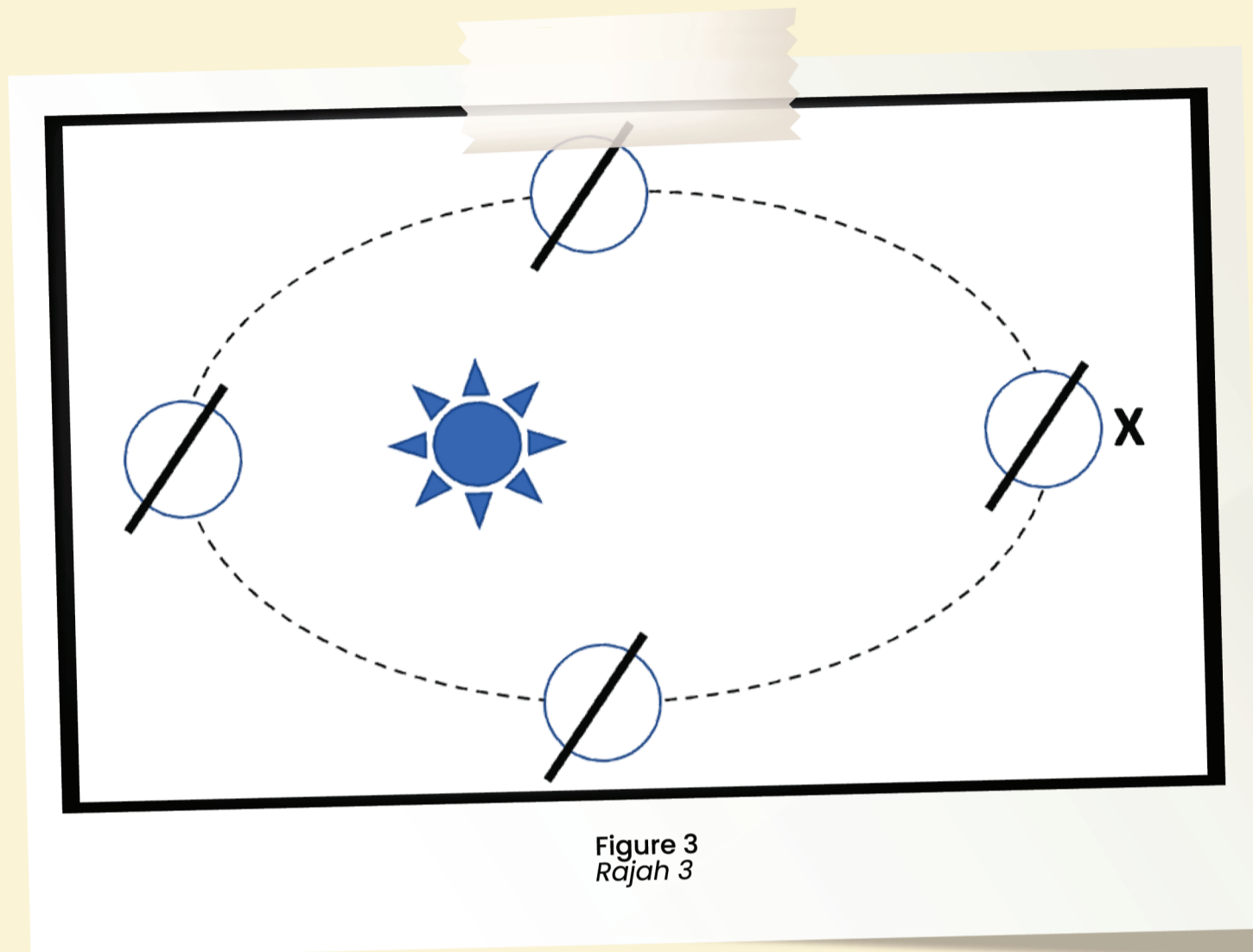


Figure 3  
Rajah 3

4. Based on Figure 3, what season is it in the Northern Hemisphere when the Earth is at position X?

*Berdasarkan rajah 3, musim apakah yang dialami di Hemisfera Utara jika Bumi berada di kedudukan X?*

- A. Summer / Musim panas
- B. Winter / Musim sejuk
- C. Autumn / Musim luruh
- D. Spring / Musim bunga

**ANSWER : B**

# SAMPLE QUESTION

5. Figure (a) shows an image of the moon taken from PERMATApintar Observatory. Based on the positions marked in Figure (b), which positions most probably is correct for the moon when the image was taken?

Rajah (a) menunjukkan imej bulan yang diambil dari Balai Cerap PERMATApintar. Berdasarkan kedudukan yang ditandakan dalam Rajah (b), kedudukan manakah yang paling hampir dengan imej bulan yang telah diambil?



The picture of moon taken from PERMATApintar Observatory  
Gambar bulan yang diambil dari Balai Cerap PERMATApintar

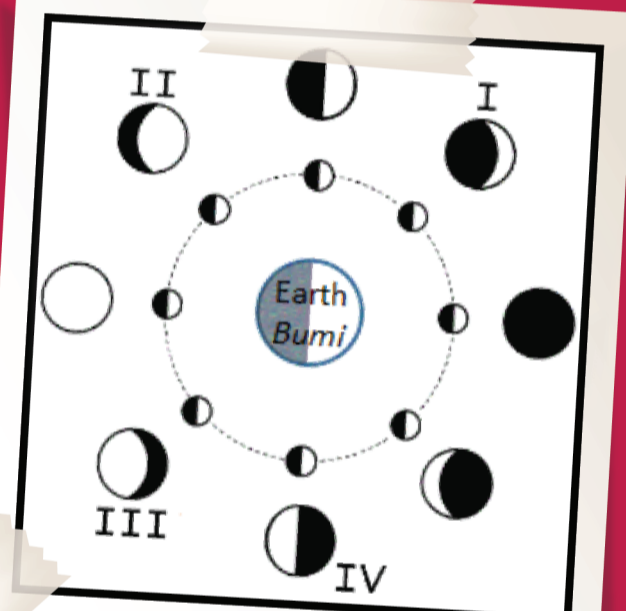


Diagram of lunar phases  
Gambar rajah fasa lunar

- A. I
- B. II
- C. III
- D. IV

**ANSWER : C**

## REGISTRATION FEE

JOIN UNDER A  
**SCHOOL**

**RM35**

PER STUDENT

JOIN AS  
**INDIVIDUAL**

**RM50**

PER STUDENT

## IMPORTANT DATES

**27  
DEC  
22**  
REGISTRATION  
OPEN

**31  
JAN  
23**  
REGISTRATION  
CLOSE

**11  
FEB  
23**  
COMPETITION  
DAY

**20  
FEB  
23**  
RESULT  
ANNOUNCEMENT

## HOW TO REGISTER ?

Registration can be made at  
[www.contesthub.my](http://www.contesthub.my)

## CONTACT US

**EARTH EXPLORER COMPETITION SECRETARIAT**

100-1, Jalan 2/23A, Off Jalan Genting Klang, Taman Danau Kota, 53300  
Setapak, Kuala Lumpur.

☎ 018 392 0204

✉ [myeso.info@gmail.com](mailto:myeso.info@gmail.com)

🌐 [www.myeso.com.my](http://www.myeso.com.my)

